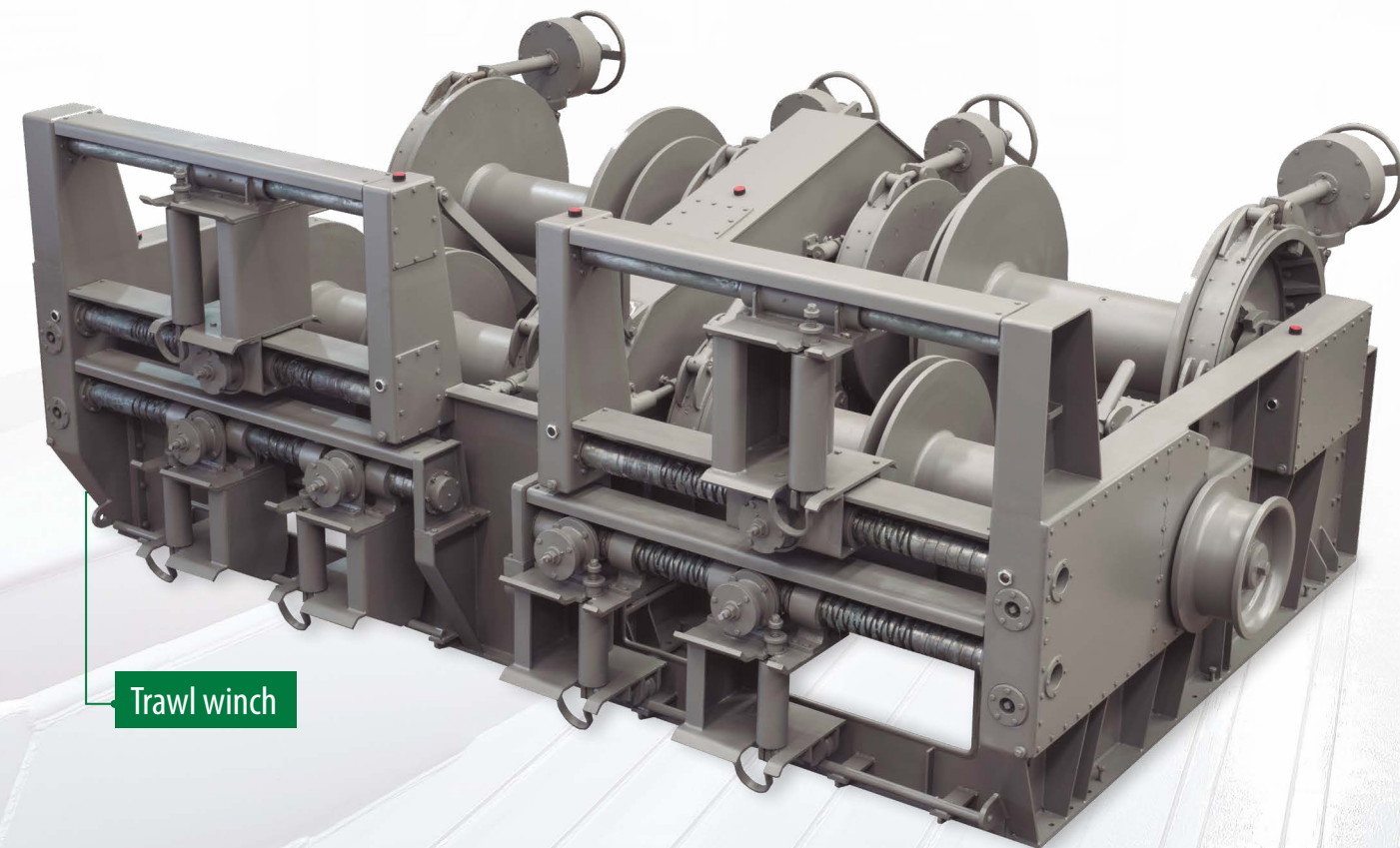


TRAWL WINCHES

Advanced Technology. Robust and Efficient.
Simple maintenance. Maximum versatility and reliability.

- Split
- Net drum
- Cod-end winches
- Monoblock
- Sweepline winches
- Outhauling winches
- Combined winch
- Gilson winches
- Research winches



Trawl winch



C/. Parroquia de Guísamo, Parcela B-17, Nave 1
15165 Bergondo. A Coruña, España
T. (+34) 981 900 044
info@jlcarral.com / www.jlcarral.com



OUR SPECIALITIES

AUXILIARY WINCHES · DECK EQUIPMENT · TRAWL WINCHES



J&L CARRAL MANUFACTURER

is a Company founded by Luis Carral López in Spain during 1921.

The Company began as a Diesel engine repair shop and slowly embarked on other types of repairs such as deck machinery. Based on the common failures that the CARRAL Company observed in the deck machinery coming in for repair, Mr. Carral decided to manufacture that type of equipment in order to avoid the same problems other manufacturers had in their products.

The transition from repair workshop to manufacturer occurs in the 60's. The first units were tested at sea on fishing boats where Mr. Carral personally supervised the completed operations in order to take note of any necessary modifications to be made for personal safety and easy operation.

After expansion in the domestic market, the Company starts sales outside Spain with great success, mainly in the fishing markets. Their fishing winches for application in trawlers earn the reputation as being robust and excellent for heavy work at sea.

The CARRAL policy is to always have in stock the critical parts of any winch they manufacture, in order to comply with immediate delivery in the future. The CARRAL family also has experience in the fishing industry as they owned a Company with fishing boats, therefore they understand how important it is to rapidly receive spare parts in case of a breakdown. It is this philosophy which helps them yet again to be a market leader in deck machinery for fishing boats.

In the 80's, CARRAL detects the bad quality of the lifting blocks offered in the market and they start their production again, the intention being to avoid the frequent problems they observed in other blocks. The production then expands to towbar and mooring bollards as complementary units.



Tracing tools for cutting sheet metal
designed by Luis Carral in 1918.

CARRAL today has more than 4000 units installed around the world on different types of vessels with a variety of applications.

Currently these units are operating in the following countries: Angola, Argentina, Cameroon, Congo, Chile, France, Gabon, Gambia, Ghana, Guinea-Bissau, Ireland, Italy, Lithuania, Morocco, Mauritania, Mexico, Mozambique, Namibia, Portugal, Russia, Scotland, Senegal, South Africa, Uruguay and the U.K.

In this new phase of the company, we have new shareholders with old and new ideas which adapt to the real market situation. The company name changed to Julio y Luis Carral, S.L., but we are still in La Coruña.

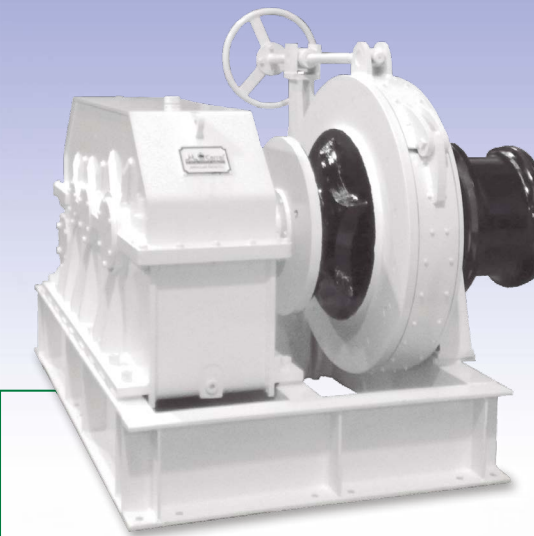
We hope to continue to enjoy the support of all our customers. On our behalf we will continue to maintain the quality, technical support, competitive prices and fast delivery as always.

AUXILIARY WINCHES

Some deck units for different types of applications.

Hydraulic or electric drive. Manual, pneumatic or hydraulic clutches and brakes.

- Anchor winches
- Mooring winches
- Towing winches
- Capstans



Anchor winch



Mooring winch



Towing winch

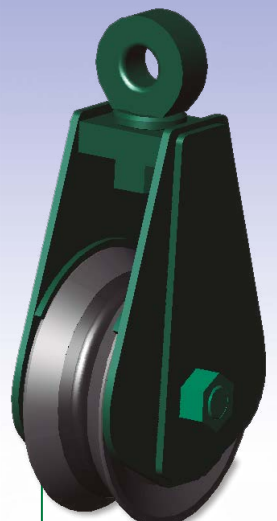


Capstan

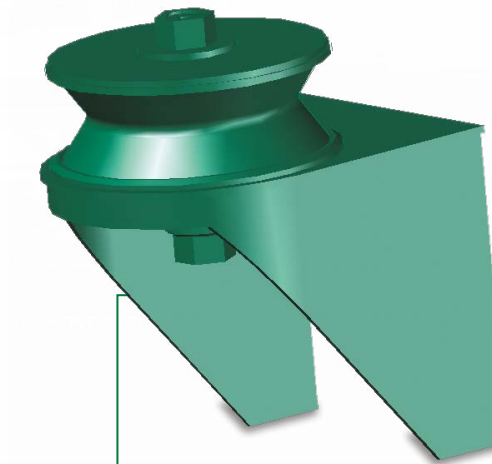
DECK EQUIPMENT

Made in steel or stainless steel. With bearings or bushings.

- Blocks
- Guiding frame
- Outriggers
- Towing hooks



Trawl block



Guiding frame



Return tackle block



Towing hook



Tackle block with bucket